

GAOLIN ELECTRONICS

3U16HP BACKPLANE WITH POWER CONNECTOR

Technology Specification

CB3002A02-000

Issue Date: 2013-05-18

CPCI 3U POWER CONNECT SWITCH BACKPLANE

Technology Specification

DESIGN ACCORDING TO:

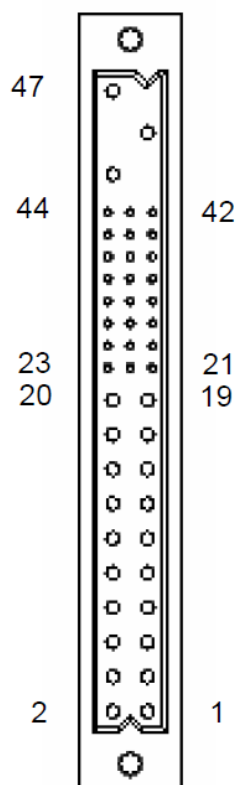
- CPCI System Management Specification PICMG 2.9 R1.0 (February 2, 2000)
- CPCI Power Interface Specification PICMG 2.11 R1.0 (October 1, 1999)

BUS STRUCTURES:

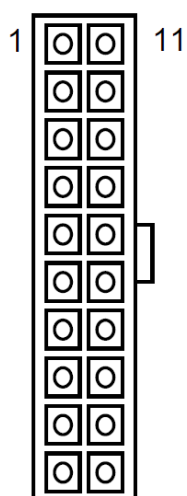
Slot	PCIHC47	ATX PSU Receptacle	PCIHC47	ATX PSU Receptacle
SPEC				

TECHNICAL DATA:

- Mechanical dimension: 128.7×80.28×3.2mm (width × height× thickness), support 3U card.
- PCB Type: 4 layer,
- Power connector: Two ATX Power ,Two PCIH47 conectors
- Maximum voltage drop on backplane power: <20mV
- V(I/O): +3.3V / +5V selectable
- Operating temperature: -40°C ~ +85°C
- Storage temperature: -55°C ~ +85°C
- MTBF: 700,000h

PIN ASSIGNMENT:**POWER_1& POWER_2: Modular Power 47P Connector**

Pin	Signal	Pin	Signal
47	ACL/-DC IN	31	GA2
46	ACN/+DC IN	30	V1 SENSE
45	CGND	29	V1ADJ
44	V3 SHARE	28	GA1
43	IPMB_PWR	27	EN#
42	+FAL#	26	RESERVED
41	V2 SHARE	25	GA0
40	IPMB_SDA	24	RTN
39	INH#	23	RESERVED
38	DEG#	22	RTN
37	IPMB_SCL	21	V4
36	V3 SENSE	20	V3
35	V1 SHARE	19	RTN
34	S RTN	13-18	V2
33	V2 SENSE	5-12	RTN
32	V2ADJ	1-4	V1

XP1&XP2: ATX Power Connector

Pin	Signal	Pin	Signal
1	+3.3V	11	+3.3V
2	+3.3V	12	-12V
3	GND	13	GND
4	+5V	14	PS_ON_L
5	GND	15	GND
6	+5V	16	GND
7	GND	17	GND
8	POWER GOOD	18	-5V
9	5V STB	19	+5V
10	+12V	20	+5V

Optional Power Taps :

The optional power taps are for +5V, 3.3V, +12V, -12V, GND.

IPMB:

Pin	Signal	Pin	Signal
1	IPMB_PWR	2	NC
3	IPMB_SDA	4	NC
5	IPMB_SCL	6	NC
7	GND	8	GND
9	GND	10	GND

Volt:

All the alarm signals and various power supply are connected to it. It is used to connect external monitor module.

Pin	Signal	Pin	Signal
1	-12V	2	NC
3	+12V	4	DEG#
5	3.3V	6	FAL#
7	5V	8	GND
9	INH#	10	GND

PWR_ON: 电源输出开关插座

Pin	Signal	Pin	Signal
1	INH#	2	GND

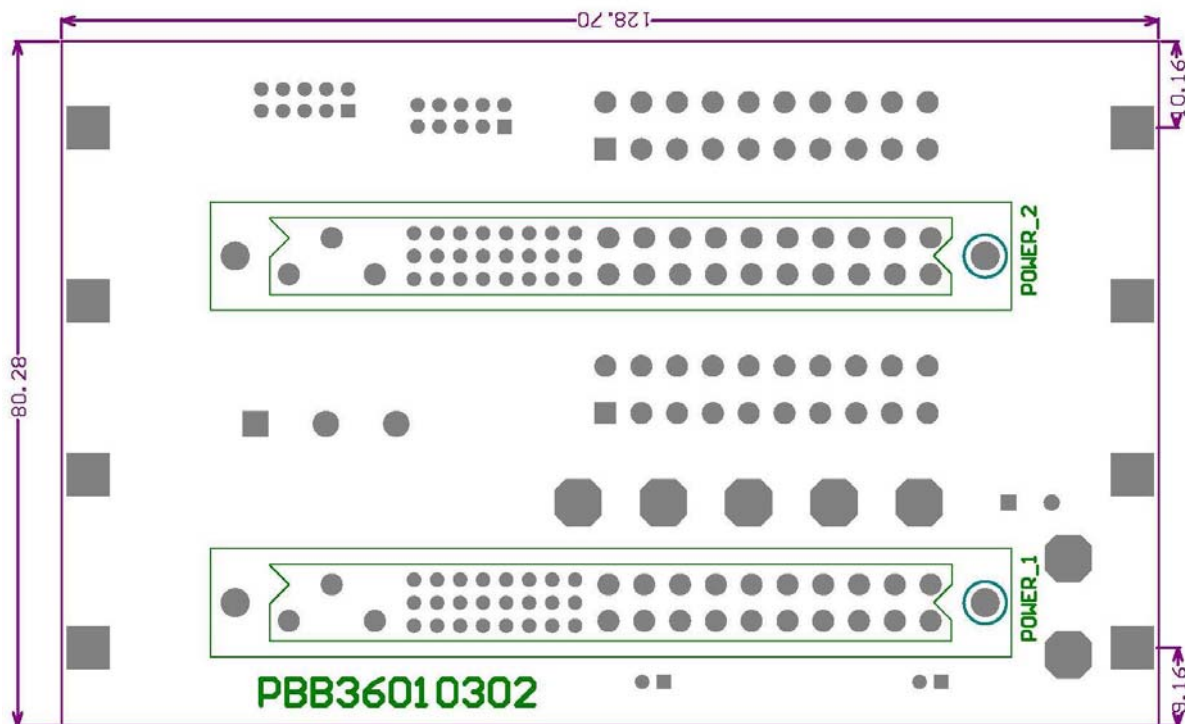
FAN: 风扇插座

Pin	Signal	Pin	Signal
1	+12V	2	GND

INPUT: 交直流输入端

Pin	Signal	Pin	Signal	Pin	Signal
1	ACL/-DC	2	ACN/+DC	3	CGND

BACKPLANE 正面视图



BACKPLANE 反面视图

